

Known Issue

When viewing the Full Grade Center, if you do not see the Grade Center scrollbar to scroll through your columns, please try these work-around instructions.

ADJUST YOUR WEB BROWSER'S PAGE MAGNIFICATION

Please try this simple browser-based adjustment to page elements and layout first. In most cases, adjusting the browser's magnification will make the scrollbars accessible.

To Magnify/Zoom In

- On Windows Computers - On your keyboard, push the *CTRL* and *+* keys at the same time.
- On Mac Computers - On your keyboard, push the *Command* ⌘ and *+* keys at the same time.

To Reduce/Zoom Out

- On Windows Computers - On your keyboard, push the *CTRL* and *-* keys at the same time.
- On Mac Computers - On your keyboard, push the *Command* ⌘ and *-* keys at the same time.

ADJUSTING DEFAULT SCROLLBAR WIDTH IN WINDOWS

If the simple browser-based corrections do not work, you may need to adjust your computer's default scrollbar size setting. Please see these instructions to enlarge the size of the scrollbar. The following instructions may be used to adjust scrollbar settings in Windows 7. To adjust the default scrollbar size on a Windows 8 or 8.1 computer, [please see this tutorial](#).

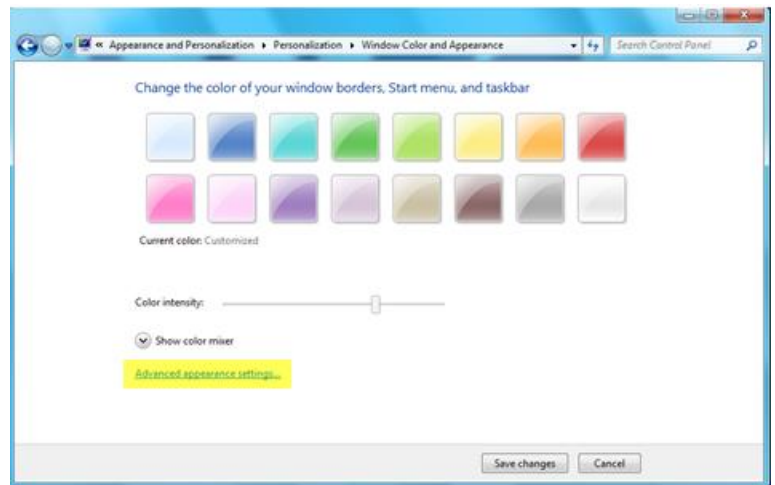
1. Go to your computer's **START** menu and select **CONTROL PANEL**. In the Control panel, click the **APPEARANCE AND PERSONALIZATION** link.



2. In the list of personalization options, locate the *Personalization* heading and click the **CHANGE WINDOW GLASS COLORS** option.



3. At the bottom of the *Window Color and Appearance* page, click the **ADVANCED APPEARANCE SETTINGS** link.

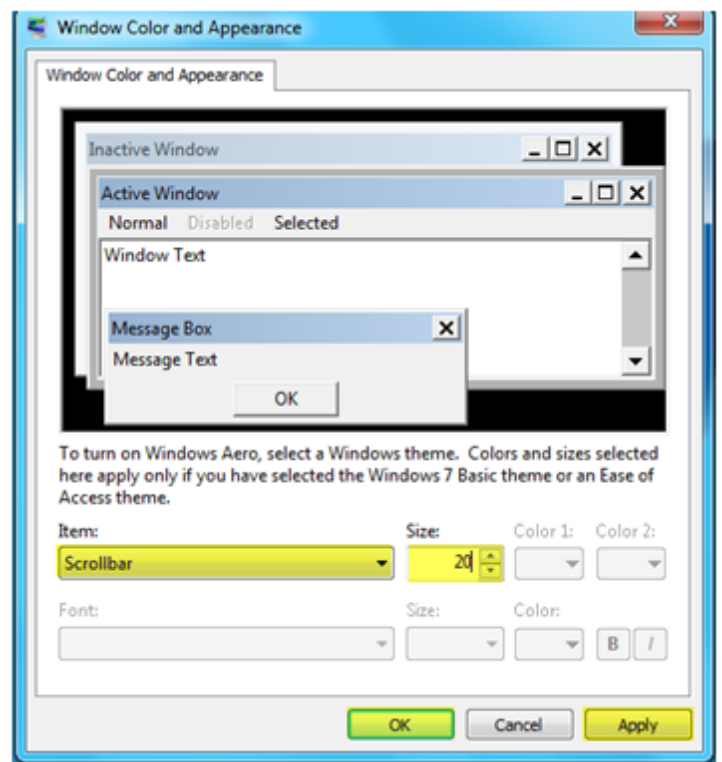


4. A Window Color and Appearance settings page will appear, with options for customizing your window's features.

Go to the **ITEM** dropdown menu and select **SCROLLBAR**.

In the **SIZE** field, increase the size to **20**. Click the **APPLY** button, then the **OK** button to save and exit.

This new scrollbar setting will be applied to the scrollbars in the browsers you use on your computer.



ADJUSTING DEFAULT SCROLLBARS WIDTH IN MAC OSx LION OR GREATER

1. Launch **SYSTEM PREFERENCES** from the dock or apple menu.
2. In the System Preferences window, select the **GENERAL** option.
3. In the General Pane, look for the scrollbar setting options. Check the **ALWAYS** checkbox from the **SHOW SCROLLBARS** options.
4. Quit System Preferences.

